

Bovine Viral Diarrhea Virus Antigen Test Point-of-Care

IDEXX BVDV Ag Point-of-Care Test

Rapid test for the detection of bovine viral diarrhea virus (BVDV) in persistently-infected animals, using ear-notch (or ear-tissue biopsy).

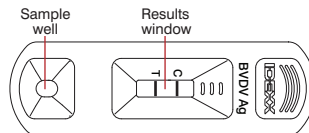
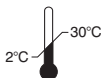
Precautions

- Handle all biological materials as though they could transmit BVDV.
- Do not cross-contaminate sample collection device(s).
- Do not pipette by mouth.
- Do not reuse pipettes that have been in contact with a sample.
- Do not eat, drink or smoke where samples or test components are being handled.
- Do not mix components from tests with different lot numbers.
- Decontaminate all wastes properly before disposal.

Test Components and Storage

- 10 lateral-flow devices with pipettes
- Two 4.5 mL bottles of buffer

Tubes for ear-notch samples are available separately.

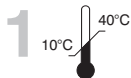


Sample Types and Storage Requirements

- **Ear notches:** ≥2 mm, from animals of any age

	18–30 °C	2–8 °C	≤-20 °C
Ear notches	≤3 days	≤7 days	Long term

Test Procedure



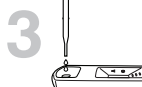
Bring all samples and test components to operating temperature.



Ear Notch

Place ear notch into a sample tube, and then:

- For small ear notch (≥2–3 mm): add 8 drops of buffer.
- For large ear notch (≥1 cm): add 16 drops of buffer.
- Swirl to mix.
- Soak for 5 minutes to 3 days.



Place test on a flat surface, then use pipette provided to add 1 drop of sample to the sample well on the test device.



Within 1 minute after step 3, add 2 drops of buffer to the sample well and start the timer. **Note:** If no liquid is passing the result window within 30 seconds after adding the buffer, add 1 additional drop of buffer to the sample well.



Read test results at 15–30 minutes.

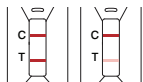
Interpreting Test Results

Note: Color in the control line may develop sooner, but results are not complete until 15 minutes after adding the buffer to the sample well.

C = Control **T = Test**

Positive Result

The red color in the test line is more intense than the background.



Negative Result

The red color in the test line is equal to or less intense than the background.



Invalid Result

If the colored background obscures the test result or the control line does not develop color, repeat the test.

